



RSJ-1000

SUPERJAWS

OWNER'S OPERATING MANUAL

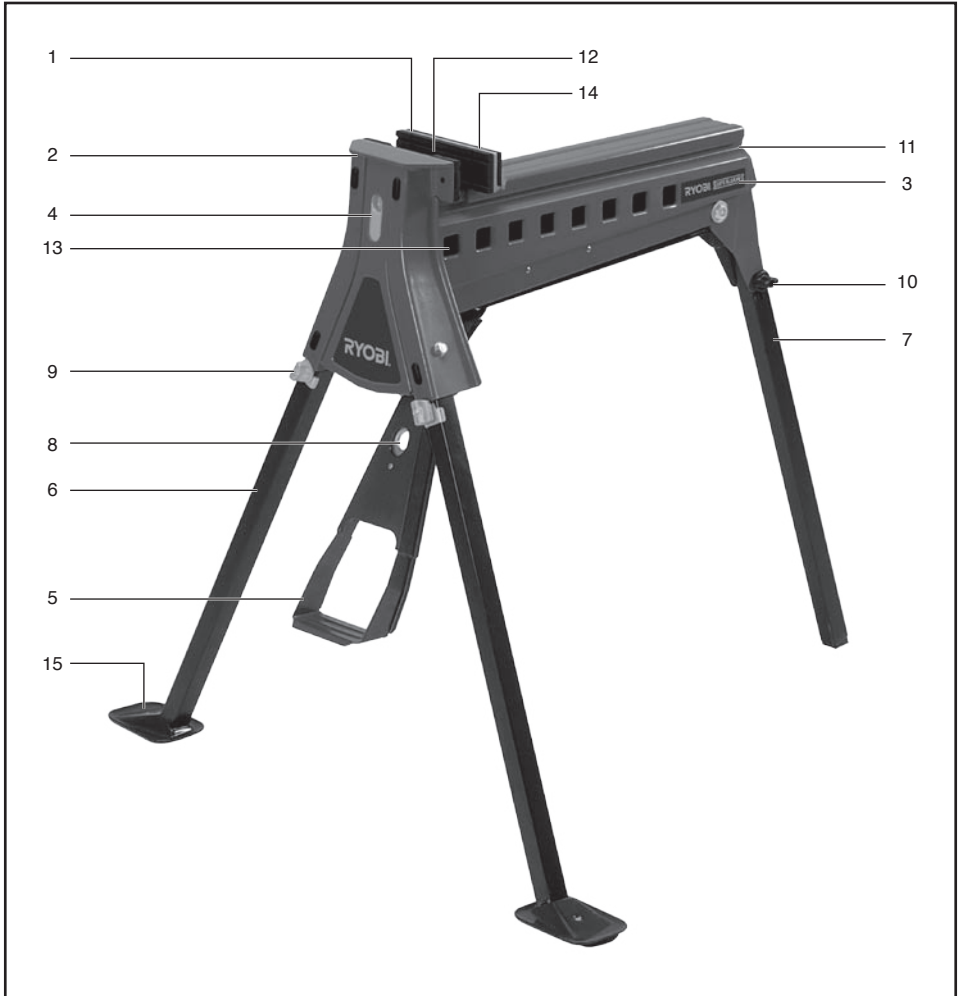


Black	Code: RSJ-1000 manual		
	Date: 090928	Edition: 03	Op: PR

用本外所有显示的颜色打印包装材料。 **Print artwork using ALL inks shown here**

DESCRIPTION

1. Moving jaw
2. Fixed jaw
3. Body
4. Lock / release switch
5. Foot pedal
6. Front legs
7. Rear leg
8. Foot pedal locking latch
9. Front leg locking knobs
10. Rear leg locking knob
11. Moving jaw locking tab
12. Fixed jaw facing
13. Extension Tray mounting holes
14. Moving jaw facings (2 pieces)
15. Foot plates



Important!

It is essential that you read the instructions in this manual before operating this machine.

Subject to technical modifications

GENERAL SAFETY RULES

- ▲ **Read and understand all instructions.** Failure to follow all instructions listed below, may result in personal injury.
- **Make sure all moving parts are free from interference.**
- **Keep hands clear of all moving parts.**
- **Ensure Superjaws is set up on firm ground in a stable manner.**
- **Be aware of overbalancing.** When a large piece is cut from one end of a job, the remaining piece may be heavy enough to over-balance the Superjaws. Always ensure the workpiece is well supported.
- **Check to make sure that all fixing screws and knobs are tight and all legs are locked into place before operating the Superjaws.**
- **The tool must be used only for its prescribed purpose.** Any use other than those mentioned in these instructions will be considered a case of misuse.
The manufacturer shall not be liable for any damage or injury resulting from such cases of misuse.
- **The manufacturer shall not be liable for any changes made to the tool nor for any damage resulting from such changes.**

SPECIFICATIONS

Model No:	RSJ-1000
Clamping range:	0 – 956mm (37 1/2")
Clamping force:	1000kg (1 tonne)
Maximum load:	100kg (220.5lb)
Jaws:	Urethane
Folded size:	275 x 775 x 295mm (10 7/8" x 30 1/2" x 11 39/64")
Standing size:	980 x 1000 x 860mm (38 37/64" x 39 49/64" x 33 27/32")
Weight:	16.5kg (36.4lb)
Optional Accessories:	Engineers Jaws Log & Pole Jaws Extension Tray

SYMBOLS



Always wear ear, eye and respiratory protection when operating power tools.



Read the Instruction Manual.



Instruction warning.



Do not use this product as a step or platform.

SETTING UP

1. With Superjaws placed upside down on the ground, loosen the rear leg locking knob (10) and slide the rear leg from its storage position.

Pivot the leg just clear of the front face. Slide it all



the way forward then lift and slide it fully into its housing at the rear. Tighten the knob.

2. Raise the foot pedal (5) until it "clicks" into position.
3. Pivot the front legs (6) out as far as they will go then turn the front leg locking knobs (9) clockwise until the knob tightens onto the leg housing, as shown.



NOTE. Several turns may be necessary on initial set-up until the clamps tighten into place – a half turn is all that is required to release the legs when folding.



4. Turn the Superjaws upright and recheck that all legs are locked firmly in position.



5. Rotate the moving jaw locking tab (11) to the horizontal position and Superjaws is now ready for use.

FOLDING

Folding is the reverse procedure of above. Ensure that:

- The lock / release switch is in the "unlock position";



- The foot pedal locking latch (8) is used to release and fold the foot pedal;
- The moving jaw locking tab (11) is in the "vertical" position to prevent the jaw from sliding out



- The rear leg is engaged fully into its housing and the rear leg locking knob (10) is tightened firmly.

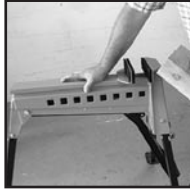
NOTE. When in its folded position the rear leg becomes a carrying handle, to aid in transportation.



OPERATION

CLAMPING

1. Check that the moving jaw locking tab (11) is set to the horizontal position and push the moving jaw (1) back until your workpiece fits between the jaws.



2. Place the workpiece against the fixed jaw (2) and slide the moving jaw forward until it touches the workpiece.

NOTE. The jaw can also be advanced forward by pressing the foot pedal repeatedly.



3. Slide the lock / release switch (4) down to the "lock" position.

NOTE. If preferred the switch can be locked after the work is clamped.

4. Apply downward pressure on the foot pedal (5) until sufficient clamping force has been applied.

NOTE. For extra force you may stand on the foot pedal (maximum 100kg) but do not jump on it, as you could damage the unit.



RELEASING



1. Slide the lock/release switch (4) up to the "release" position.
2. Push on the foot pedal then allow it to return up and release the workpiece.

▲ Ensure you are supporting the workpiece to prevent it from falling once the jaw is released.

NOTE. If you have clamped the object very tightly, you may need to exert more pressure on the foot pedal before it will release.



3. Slide the moving jaw back and remove your workpiece.

CLAMPING ON ONE SIDE OF THE JAW

On occasions, large or awkward workpieces can only be clamped on one side of the jaws.

Always fit a spacer (the same thickness as your workpiece) to the other side of the jaws, to prevent the moving jaw from skewing.



CLAMPING LARGE OBJECTS (460mm to 956mm)

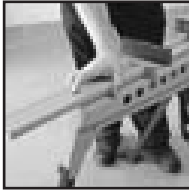
The moving jaw can be reversed to accommodate workpieces greater than 460mm and less than 956mm.

1. Set the lock / release switch (4) to the "release" position and ensure that the foot pedal is released.
2. Check that the moving jaw locking tab (11) is in the horizontal position.
3. Slide the moving jaw (1) fully from its tracks.



4. Rotate it 180 degrees and re-insert it into the tracks.

- Whenever clamping objects with the moving jaw reversed, ensure the workpiece sits down onto the sliding jaw, and is parallel to it. Avoid clamping workpieces at the



top of the jaws (with a gap between the workpiece and the base of the moving jaw) as excessive pedal pressure could damage the unit.

- When clamping large or heavy materials, provide outboard support to prevent Superjaws from tipping over.

NOTE. Clamping workpieces up to 956mm can be achieved by removing the jaw facings (see page 8).

USING AS AN ANVIL

The fixed jaw is sufficiently robust to be used as an anvil for strip metal work.



- ▲ Do not use the moving jaw as an anvil. You could damage it.

For thicker materials we recommend the use of the optional Engineer's Jaws.

USING AS A PRESS

When the lock / release switch (4) is in the release position Superjaws can be used as a press.

With each full stroke of the foot pedal, the moving jaw will advance about 25mm.



GENERAL OPERATING ADVICE

When working along the line of the jaws, place your foot on the foot plates (15) to prevent Superjaws from moving.

Ripping A Plank

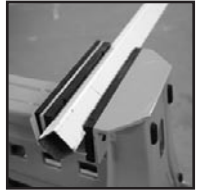
1. When ripping a plank, stop your cut before reaching the jaws.
2. Remove the workpiece and re-clamp with sufficient amount of the cut beyond the jaws, so that you can drop in your saw to recommence your cut.
3. Before clamping, insert a spacer slightly thicker than your saw cut, at the jaw area, to keep the cut open.



Clamping Square Tubing

It is easier to hacksaw square tubing or similar on the diagonal.

Use the V-grooves in the urethane jaws to securely hold your material.



Sharpening Chainsaws

Superjaws makes an ideal clamp to hold a chainsaw or chain blade while sharpening the teeth.

NOTE. If sharpening a chainsaw use two wooden blocks, either side of the bar, to ensure the clamping jaws are clear of the chain, which can then be rotated as each tooth is filed.



MAINTENANCE

- Any damage to Superjaws should be repaired and carefully inspected before use, by qualified repair personnel.
- The Manufacturer will not be responsible for any damage or injury caused by unauthorised repair or mishandling of the machine.

REMOVING THE URETHANE JAW FACINGS

The jaw facings can be removed to achieve a greater clamping range, or for replacement if worn or damaged, or when fitting the optional jaws.

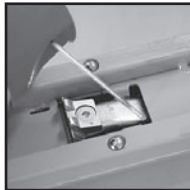
1. The fixed jaw facing (12) is removed by prying it off the fixed jaw (2) using a screwdriver or similar.



2. To remove the moving jaw facing, push the backing face to the right (when viewed from the front of Superjaws) to disengage the connection pins. The backing face can then be removed, allowing the front to be pulled off the moving jaw.



The pawl carrier pivot pin may occasionally require a small amount of spray lubricant, as shown, if it doesn't pivot smoothly.



OPTIONAL ACCESSORIES

ENGINEERS JAWS

The bolt-on jaws are manufactured from an extremely strong ductile cast iron, and are specially shaped to increase grip when clamping pipe or round sections up to 50mm in diameter. They also have an integral anvil for hammering or bending of heavy metal sections.



LOG AND POLE GRIPPING JAWS

Suitable for gripping logs or poles, these jaws also bolt onto the standard steel jaws and are formed from steel plate, zinc plated for corrosion resistance.



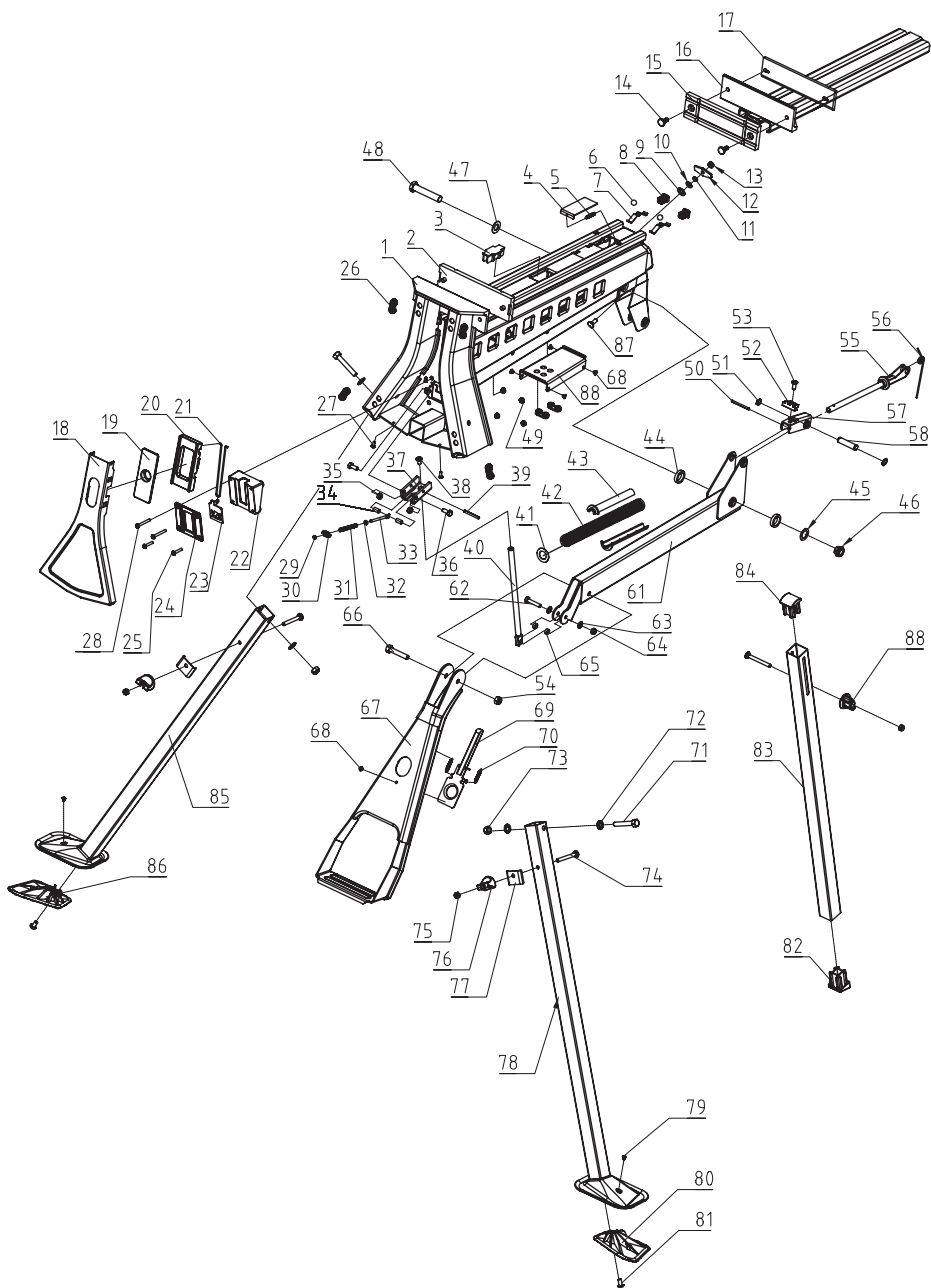
Logs or poles up to 175mm in diameter are gripped firmly for chain sawing, drilling, rebating etc.

EXTENSION TRAY

The Extension Tray fits through the mounting holes (13) in either side of the main body. It provides outboard support for the workpiece, keeping it level while clamping into position. A tough high density polyethylene tray locates onto the support tubes as a convenient place to hold tools and other bits and pieces.



For additional support and capacity a second Extension Tray can be fitted onto the opposite side of Superjaws.



TECHTRONIC INDUSTRIES AUSTRALIA PTY LIMITED

GUARANTEE



Subject to the guarantee condition below, this Ryobi tool (hereinafter called "the product") is guaranteed by TECHTRONIC INDUSTRIES AUSTRALIA PTY LIMITED (hereinafter called "the Company") to be free from defects in material or workmanship for a period of 24 months from the date of original purchase covering both parts and labour. Under the terms of this guarantee, the repair or replacement of any part shall be the opinion of the Company or its authorised Service centre. Should service become necessary during the warranty period, the owner should contact the customer service HELPLINE 1300 361 505 or contact the retailer from whom the product was purchased.

In order to obtain guarantee service, the owner must present the sales docket and Guarantee Certificate to confirm date of purchase. This product is sold by the dealer or Service centre as principal and the dealer has no authority from the Company to give any additional guarantee on the Company's behalf except as herein contained or herein referred to.

Guarantee Conditions

This guarantee only applies provided that the Product has been used in accordance with the manufacturer's recommendations under normal use and reasonable care (in the opinion of the Company) and such guaran-

tee does not cover damage, malfunction or failure resulting from misuse, neglect, abuse, or used for a purpose for which it was not designed or is not suited and no repairs, alterations or modifications have been attempted by other than an Authorised Service centre. This guarantee will not apply if the tool is damaged by accident or if repairs arise from normal wear and tear. The Company accepts no additional liability pursuant to this guarantee for the costs of travelling or transportation of the Product or parts to and from the service dealer or Service centre - such costs are not included in this guarantee.

Certain legislation, including the Trade Practices Act, 1974 (as amended) and other state and territorial laws give rights to the buyer and impose liability on the seller in certain circumstances. Nothing herein shall have the effect of excluding, restricting or modifying any condition, guarantee, right or liability imposed, to the extent only that such exclusion, restriction or modification would render any term herein void.



TECHTRONIC INDUSTRIES AUSTRALIA PTY LIMITED

A.B.N. 98 002 277 509

SYDNEY: Building B, Rosehill Industrial Estate, 3-5 Shirley Street, Rosehill N.S.W. 2142

Contact during normal business hours.

Tel: 1300 361 505 - Fax: 1800 807 993 - www.ryobi.com.au

ALL AUSTRALIAN ENQUIRIES TEL : 1300 361 505

TECHTRONIC INDUSTRIES N.Z. LIMITED

AUCKLAND: 27 Clemow Drive, Mt Wellington, N.Z.

Tel: (09) 573 0230 - Free Call: 0800 279 624 - Fax: (09) 573 0231 - www.ryobi.co.nz

Contact during normal business hours.

This Guarantee Form Should Be Retained By The Customer At All Times

For your record and to assist in establishing date of purchase (necessary for in-guarantee service) please keep your purchase docket and this form completed with the following particulars.

Purchased From _____

Address Of Dealer _____

Date _____ Model No _____ Serial No _____

Present This Form With Your Purchase Docket When Guarantee Service Is Required.