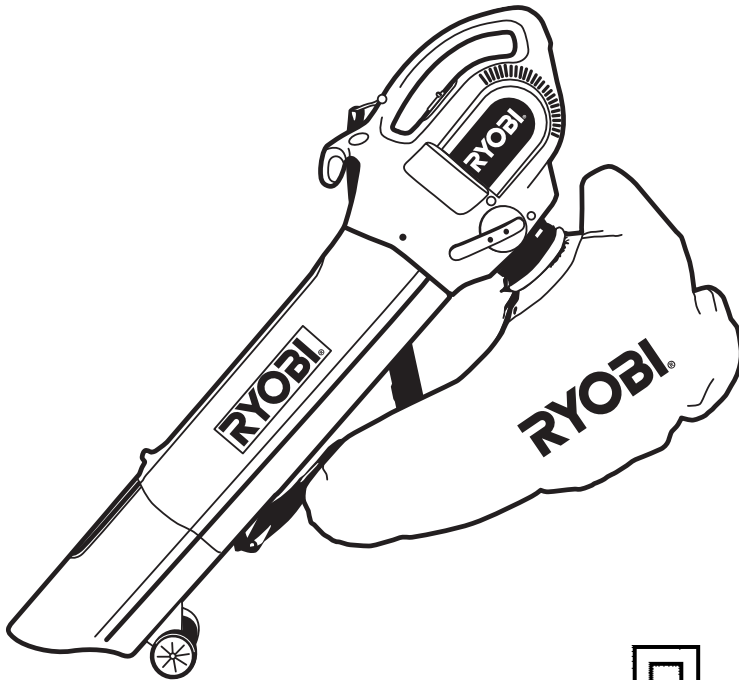


RYOBI®

OWNER'S OPERATING MANUAL ELECTRIC BLOWER / VAC MODEL EMB1800ET & EMB2000ET



**DOUBLE
INSULATED**



N197

THANK YOU FOR BUYING A RYOBI BLOWER/VAC

Your new blower/vac has been engineered and manufactured to Ryobi's high standard for dependability, ease of operation, and operator safety. Properly cared for, it will give you years of rugged, trouble free performance.



CAUTION: Carefully read through this entire owner's manual before using your blower/vac.

Pay close attention to the Rules for Safe Operation, Warnings, and Cautions.

If you use your blower/vac properly and only for what it is intended, you will enjoy years of safe, reliable service.

Thank You again for buying Ryobi tools.

SAVE THIS MANUAL FOR FUTURE REFERENCE.

RULES FOR SAFE OPERATION

The purpose of safety rules is to attract your attention to possible dangers. The safety symbols and the explanations with them, require your careful attention and understanding. The safety warnings do not by themselves eliminate any danger. The instruction or warnings they give are not substitutes for proper accident prevention measures.



SAFETY ALERT SYMBOL. Indicates caution or warning. May be used in conjunction with other symbols or pictures.



WARNING: Failure to obey a safety warning can result in serious injury to yourself or to others. Always follow the safety precautions to reduce the risk of fire, electric shock and personal injury.



WARNING: Do not attempt to operate this tool until you have read thoroughly and understood completely, safety rules, etc. contained in this manual. Failure to comply can result in accidents involving fire, electric shock or serious personal injury. Save owners manual and review frequently for continuing safe operation and instructing others who may use this tool.



The operation of any tool can result in foreign objects being thrown into your eyes, which can result in severe eye damage. Before beginning power tool operation, always wear safety goggles or safety glasses with side shields and a full face shield when needed. We recommend Wide Vision Safety Mask for use over eyeglasses or standard safety glasses with side shields.

- 1. KNOW YOUR POWER TOOL.** Read owners manual carefully. Learn its applications and limitations as well as the specific potential hazards related to this tool.
- 2. GUARD AGAINST ELECTRICAL SHOCK BY PREVENTING BODY CONTACT WITH GROUNDED SURFACES.** For example, pipes, radiators, ranges, refrigerator enclosures.
- 3. KEEP WORK AREA CLEAN.** Cluttered areas and benches invite accidents.
- 4. AVOID DANGEROUS ENVIRONMENT.** Don't use power tools in damp or wet locations or expose to rain. Keep work area well lit.
- 5. KEEP CHILDREN AND VISITORS AWAY.** Visitors should wear safety glasses and be kept a safe distance from work area. Do not let visitors contact tool or extension cord.
- 6. STORE IDLE TOOLS.** When not in use, tools should be stored in a dry and high or locked-up place, out of reach of children.
- 7. DON'T FORCE TOOL.** It will do the job better and safer at the rate at which it was designed.
- 8. USE RIGHT TOOL.** Don't force small tool or attachment to do the job of a heavy duty tool. Don't use tool for purpose not intended.

- 9. DRESS PROPERLY.** Do not wear loose clothing or jewellery. They can be caught in moving parts. Rubber gloves and non-skid footwear are recommended when working outdoors. Also wear protective hair covering to contain long hair.
- 10. ALWAYS WEAR SAFETY GLASSES.** Everyday eyeglasses have only impact resistant lenses, they are not safety glasses.
- 11. PROTECT YOUR LUNGS.** Wear a dust mask if operation is dusty.
- 12. PROTECT YOUR HEARING.** Wear hearing protection during extended periods of operation.
- 13. DON'T OVERREACH.** Keep proper footing and balance at all times. Do not use tool on a ladder or unstable support. Secure tools when working at elevated levels.
- 14. MAINTAIN TOOLS WITH CARE.** Keep tools sharp and clean for better and safer performance. Follow instructions for lubricating and changing accessories.
- 15. REMOVE ADJUSTING KEYS AND WRENCHES.** Form a habit of checking to see that keys and adjusting wrenches are removed from tool before turning it on.
- 16. NEVER USE IN AN EXPLOSIVE ATMOSPHERE.** Normal sparking of the motor could ignite fumes.
- 17. KEEP HANDLES DRY, CLEAN AND FREE FROM OIL AND GREASE.** Always use a clean cloth when cleaning. Never use brake fluids, gasoline, petroleum based products, or any strong solvents to clean your tool.
- 18. STAY ALERT AND EXERCISE CONTROL.** Watch what you are doing and use common sense. Do not operate tool when you are tired. Do not rush operation of tool.
- 19. CHECK DAMAGED PARTS.** Before further use of the tool, a guard or any other part that is damaged should be carefully checked to determine that it will operate properly and perform its intended function. Check for alignment of moving parts, binding of moving parts, breakage of parts, mounting and any other conditions that may affect its operation. A guard or any other part that is damaged should be properly repaired or replaced by an authorised service centre.
- 20. DO NOT USE TOOL IF SWITCH DOES NOT TURN IT ON AND OFF.** Have defective switches replaced by authorised service centre.
- 21. DO NOT OPERATE THIS TOOL WHILE UNDER THE INFLUENCE OF DRUGS, ALCOHOL OR ANY MEDICATION.**
- 22. THE APPLIANCE IS NOT INTENDED FOR USE BY YOUNG OR INFIRM PERSONS WITHOUT SUPERVISION.**
- 23. YOUNG CHILDREN SHOULD BE SUPERVISED TO ENSURE THAT THEY DO NOT PLAY WITH THE APPLIANCE.**

SAVE THESE INSTRUCTIONS FOR FUTURE REFERENCE

Due to continued product refinement policy, product features and specifications can and will change without notice. Check current features and specifications with your retailer.

Please Read and Save these instructions

When using an electrical appliance, basic precautions should always be followed to assure maximum safety and optimum performance. Read the Owners Manual before assembling and operating this appliance. Failure to comply with instructions may result in fire, electrical shock or personal injury.

Warning

To reduce the risk of electric shock:

1. Use only with an extension cord intended for outdoor use, match wire gauge to the cord length. A two-wire cord without a ground connection may be used since the appliance is double insulated. Keep the extension cord away from heat, oil and sharp edges.
2. Do not abuse cord. Never carry appliance by cord or pull cord to disconnect from outlet. Grasp the plug, not the cord.
3. Keep cord clear of operator and obstacles at all times. Do not expose cord to heated surfaces, oil, water, or pull around sharp edges, corners, or close door on cord.
4. Avoid unintentional starting. Be sure the switch is in the "0"(off) position while connecting and disconnecting to a power supply. Do not carry plugged-in appliance with finger on switch.
5. Place switch in the "0" position and disconnect appliance from power supply when not in use and before servicing.
6. Do not operate the tool near people, especially children or pets. Turn it off if they get too close. Maintain a safe distance of at least 5m from other people when using the tool.
7. Only use the tool according to the instructions given in this manual. Use only spare parts and accessories recommended by the manufacturer.
8. Never use appliance if the cord or plug has been damaged, the motor or the unit itself is not working as it should, or it has been dropped, damaged, left outdoors or dropped into water.
9. This appliance is provided with double insulation.
10. Never operate the appliance in wet or damp conditions or around swimming pools, hot tubs, etc. Do not use to blow snow.
11. Do not handle the plug or the tool with wet hands and do not use the tool in the rain.
12. Inspect appliance for any damage to the housing, cord or plug, Keep all fasteners tight.
13. Do not use if the switch does not turn the appliance on and off properly.
14. Always inspect the area before starting the appliance to remove debris and hard or sharp objects that can be blown or cause damage during operation.
15. Do not overreach or use from unstable surfaces such as ladders, trees, steep slopes, rooftops, etc. Keep firm hold of handle and walk, never run. Keep firm footing and balance at all times.
16. Never blow debris in the direction of bystanders or solid objects. The force of the air can cause objects to be blown or ricochet, which can harm people. Never place objects inside blower tubes.
17. Never operate with any air openings blocked. Keep air openings free of dust, lint, hair and anything that may reduce airflow. Do not plug anything into openings or blowers tubes.
18. Never use the appliance for spreading chemicals, fertilizer, or any other substances that may contain toxic materials. Do not use appliance as a sprayer of flammable liquids.

19. Keep all the air intakes and the blower tube free of dust, lint, hair and other material that may cause a reduction in air flow.
20. Use extra care when using on stairs.
21. Do not switch on the tool in enclosed or poorly ventilated spaces or in the presence of inflammable and/or explosive substances such as liquids, gas and powders.)
22. Disconnect electrical supply before opening inlet cover or installing pick up tubes.



Double Insulated



Use at distance of at least 5m from other people



Do not use in the rain



Conforms to relevant safety standards



Wear eye, ear and breathing protection



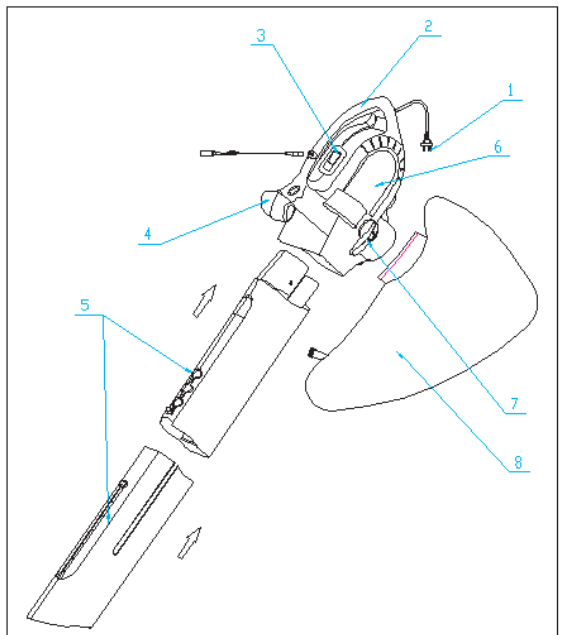
Read the instructions



Recycle unwanted materials instead of disposing of them as waste. All tools, hoses and packaging should be sorted, taken to the local recycling centre and disposed of in an environmentally safe way.

Product description

1. Power cord restraint
2. Handle
3. On/Off switch
4. Additional handle
5. Blower Vac Tubes
6. Motor Housing
7. Function switch
8. Vacuum bag
- A. Screws



Specifications

EMB1800ET

Voltage240V~50Hz
Input Power.....1800W
No Load Speed.....15000 min-1

Blower velocity.....270km/h
Maximum blower air output....13m3/min
Net Weight.....5.5Kgs
Gross Weight:.....7.5Kgs
Vacuum bag capacity.....40 Litre
Cable dimension (length).....35cm
Weighted sound pressure..... 86.2 dB(A)
Weighted sound power.....99.2 dB(A)
Vibration of front handle..... 2.58 m/s_
Vibration of main rear handle...2.32m/s_

EMB2000ET

Voltage240V~50Hz
Input Power.....2000W
No Load Speed.....15000 min-1

Blower velocity.....270km/h
Maximum blower air output....13m3/min
Net Weight.....5.5Kgs
Gross Weight:.....7.5Kgs
Vacuum bag capacity.....40 Litre
Cable dimension (length).....35cm
Weighted sound pressure..... 86.2 dB(A)
Weighted sound power.....99.2 dB(A)
Vibration of front handle..... 2.58 m/s_
Vibration of main rear handle...2.32m/s_

Assembly instructions(Fig.1)

- The blower vac tubes must be assembled before the machine is used.
- Fit the guiding grooves in the blower vac tube upper section 5 and lower section one on top of the other.
- Push two sections firmly together until the clip in the moulding engages.
- Undo 2 screws A to the place where the blower vac tube can not reach.
- Slide the blower vac tube into motor housing 6.
- Tighten 2 screws A and make sure the blower vac tubes are firmly closed with the motor housing.
- Attach the Vacuum bag to the hook on the blower vac tubes.

Caution: In the interests of safety, the pipes should not be dismantled after they have been assembled.

Operation

Operating instructions

1. Always wear safety goggles or other suitable eye protection.
2. Always wear long pants, shoes and gloves. Do not wear loose clothing, jewelry, short pants, sandals or go barefoot.
3. Always wear a respirator or face mask when working with the blower in a dusty environment.
4. Always inspect the area before starting the appliance to remove debris and hard or sharp objects that can be blown or cause damaged during operation.
5. Never operate this appliance when you are tired, ill or under the influence of alcohol, drugs or medication.
6. Use only 240V~ voltage supply as shown on the nameplate of the appliance.
7. Always run the appliance with the blower tubes attached to the unit.



WARNING: Always disconnect the power supply before dismantling the vacuum tube.

8. Always work moving away from solid objects such as walls, large stones, automobiles and fences.
9. Clean spaces with corners by starting in corners and moving outward to straight areas to prevent an accumulation of debris, which could fly into face.
10. Be careful when working near valuable plants. The force of air could damage tender plants.
11. Uses for your blowers: sweeping debris or grass clippings from driveways, sidewalks, patios, parks etc. Gathering grass clippings, straw or leaves into piles. Removing debris from corners, around joints and between bricks.

Before starting

Before starting the machine, make sure that the vacuum bag is fitted and the shoulder strap is adjusted to a suitable working position.

Cable connection (Fig. 2)

Attach the extension cord to one side of the cable hook as shown in Fig. 2.

On/Off switch (Fig. 3)

- The On/Off switch 3 is on the handle 2 of the motor housing 6.
- To switch on, push the switch forward to position "1" .
- To switch off, push the switch back to position "0".

Blowing (Fig. 4 and 5a)

Blow mode can be also used to clean corners, fences, walls, wooden areas or beneath cars. Be careful how you point the jet of air as it could move heavy material and cause injury or damage.

- Turn the Function switch anti-clockwise (B) to the position of blow mode.
- Turn the switch to on, point the jet of air in front of you and move forward, slowly to gather together the leaves or to move the leaves from inaccessible areas.

Vacuum mode (Fig. 4)

- Set the Function switch clockwise (A) to the position of vacuum mode.
- Make sure that the vacuum bag is fitted properly.
- Hold the blower vac tube several centimeters over the leaves which you are going to suck up. Now switch the machine on.
- Hold the machine as shown in Fig. 5b and 5c, tilting the Blower/ Vacuum tube slightly and use a sweeping action to collect light debris with approximately 50mm distance between the opening of Blower/ Vacuum tube and the floor or ground.
- The leaves will be sucked up into the tube, mulched up and thrown into the vacuum bag.

When the vacuum bag is full, the vacuum power will be greatly reduced. When this happens, turn the switch to position "0" (off) and disconnect the plug from the electricity supply. Wait until the suction fan has stopped completely before opening. Open the zip fastener inside the bag, spread out the opening and empty it completely. If you have collected only leaves or vegetable matter, they will already have been shredded and will be ready for composting. Zip up the bag and resume work.



Caution! Before re-fitting the bag, clean the inside of the exhaust opening, removing any shredded deposits. Pay special attention to the cleaning of the supporting edges of the air flow deviator on the inside of the tube.



Warning! Always disconnect the power supply before dismantling the vacuum tube.



Warning! Before any maintenance work, first unplug the machine from the mains power.

MAINTENANCE

1. Place switch in "0"(off) position and unplug the power supply before the appliance is serviced, cleaned or maintenance is performed.
2. Keep air intake clean and air vents free of debris to avoid overheating the motor.
3. Do not use cleaning agents to clean the plastic parts of the tool. A mild detergent on a damp cloth is recommended. Water must never come into contact with the tool.
4. When you have finished work, remove the vacuum bag, turn it upside down and inside out and clean it thoroughly. Debris caught between the zipper teeth may cause the zipper to break.
5. The vacuum bag is a consumable item and is susceptible to wear and tear, therefore is not covered by warranty.
6. Leaving wet or damp leaves, grass clippings etc... in the bag will cause the bag material to rot. Always thoroughly clean the vacuum bag after use before storage.
7. If the blower vibrates abnormally, stop motor immediately. Abnormal vibration usually indicates a mechanical problem continued operation could lead to injury or damage.
8. No lubrication is necessary as the motor is equipped with lifetime-lubricated bearings.

9. If the blower does not operate, turn switch to "0" position and disconnect from power supply first, then from blower. If the blower still does not operate, contact an authorised Ryobi service agent. Do not attempt to repair it yourself. There are no serviceable parts inside.

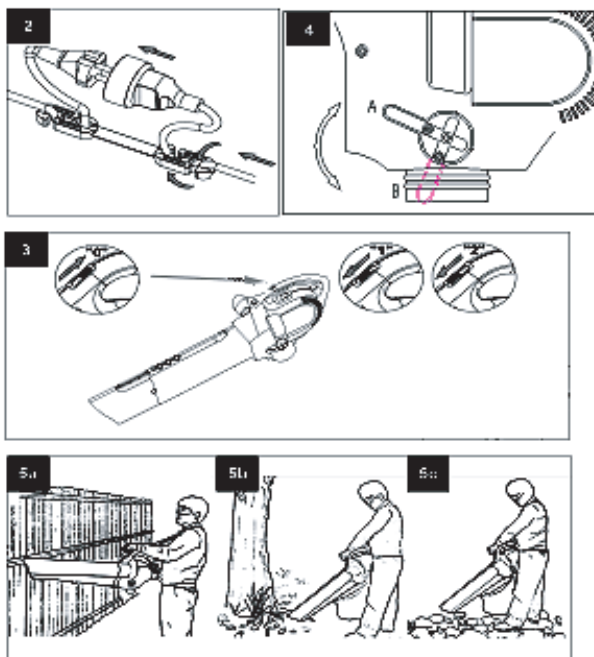
Storage

1. Clean blower before storing
 - Free debris from air intake
 - Clean plastic parts with a mild soap and sponge damped with warm water.
 - Do not spray blower with water
 - Store the vacuum bag free of wet leaves or grass clippings and in a dry place out of the sun.

Warning

Do not expose to rain. Avoid all types of detergents, cleaners or solvents. Never submerge in water or other liquids.

2. When not in use, store your appliance indoors in a dry place out of reach of children.



RYOBI TECHNOLOGIES AUSTRALIA PTY. LTD.

GUARANTEE



Subject to the guarantee condition below, this Ryobi tool (hereinafter called "the product") is guaranteed by Ryobi (hereinafter called "the Company") to be free from defects in material or workmanship for a period of 24 months from the date of original purchase covering both parts and labour. Under the terms of this guarantee, the repair or replacement of any part shall be the opinion of the Company or its authorised agent. Should service become necessary during the warranty period, the owner should contact the Authorised Ryobi service agent, or the nearest Company Branch Office. In order to obtain guarantee service, the owner must present the sales docket and Guarantee Certificate to confirm date of purchase. This product is sold by the dealer or agent as principal and the dealer has no authority from the Company to give any additional guarantee on the Company's behalf except as herein contained or herein referred to.

Guarantee Conditions

This guarantee only applies provided that the Product has been used in accordance with the manufacturer's recommendations under normal use and reasonable care (in the opinion of the Company) and such

guarantee does not cover damage, malfunction or failure resulting from misuse, neglect, abuse, or used for a purpose for which it was not designed or is not suited and no repairs, alterations or modifications have been attempted by other than an Authorised Service Agent. This guarantee will not apply if the tool is damaged by accident or if repairs arise from normal wear and tear.

The Company accepts no additional liability pursuant to this guarantee for the costs of travelling or transportation of the Product or parts to and from the service dealer or agent - such costs are not included in this guarantee.

Certain legislation, including the Trade Practices Act, 1974 (as amended) and other state and territorial laws give rights to the buyer and impose liability on the seller in certain circumstances. Nothing herein shall have the effect of excluding, restricting or modifying any condition, guarantee, right or liability imposed, to the extent only that such exclusion, restriction or modification would render any term herein void.

RYOBI®

RYOBI TECHNOLOGIES AUSTRALIA PTY. LTD.

A.B.N. 98 002 277 509

SYDNEY: 359-361 Horsley Road, Milperra, N.S.W. 2214.

Contact during normal business hours.

Tel: (02) 9792 9888 - Fax: 1800 807 993 - www.ryobi.com.au

BRISBANE:

All enquiries Tel : 1300 361 505

TOWNSVILLE:

All enquiries Tel : 1300 361 505

MELBOURNE:

960 Stud Road, Rowville, Vic. 3178

Tel : (03) 9764 8655

HOBART:

All enquiries Tel : 1300 360 216

ADELAIDE:

All enquiries Tel : 1300 360 216

PERTH:

33-35 Sorbonne Cres., Canning Vale, W.A. 6155.

Tel : (08) 9455 7775

RYOBI NEW ZEALAND PTY. LTD.

AUCKLAND: 27 Clemon Drive, Mt Wellington, N.Z.

Tel: (09) 573 0230 - Free Call: 0800 279 624 - Fax: (09) 573 0231 - www.ryobi.co.nz

Contact during normal business hours.

This Guarantee Form Should Be Retained By The Customer At All Times

For your record and to assist in establishing date of purchase (necessary for in-guarantee service) please keep your purchase docket and this form completed with the following particulars.

Purchased From _____

Address Of Dealer _____

Date _____ Model No _____ Serial No _____

Present This Form With Your Purchase Docket When Guarantee Service Is Required.